



**Stainless Sections**  
*Art, Fine Colour, Etching,*  
*Mirror Finish Stainless Steel*  
*Sheet For Architectural Use*

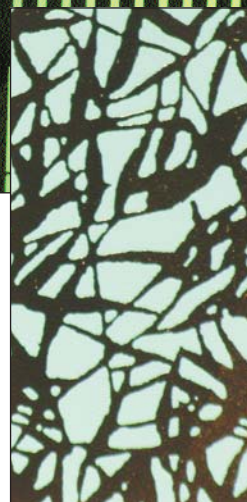
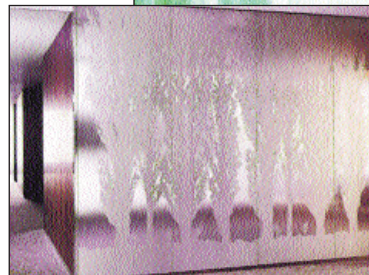


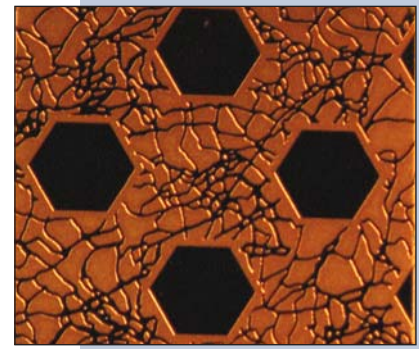


*The durability of stainless steel as a building product is unquestioned. The use of stainless steel as a decorative product is not always recognised.*

At Stainless Sections, we carry and supply a wide range of stainless steel sheets for use as building jewellery. Pattern and finishes, as well as the use of colour is varied. Finishes range from etching, mirror, and a combination, including linishing and brushing.

Application can vary to include your specific requirements as to appearance, hygiene and corrosion resistance.





## The Stainless Steel Advantage

Our stainless steel sheets for architectural decorative use have the following advantages:

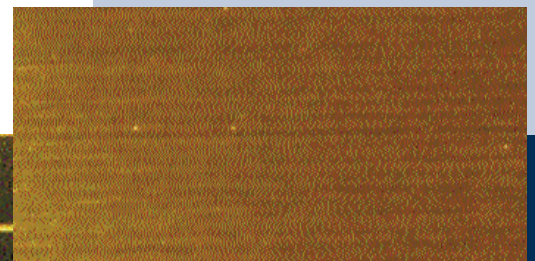
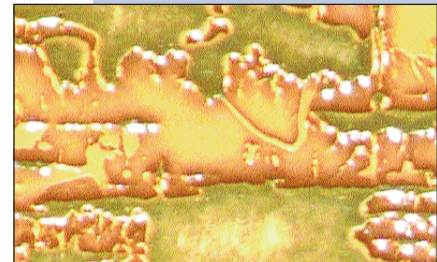
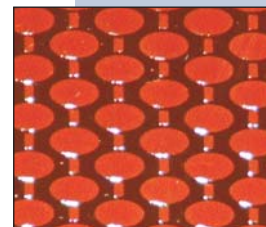
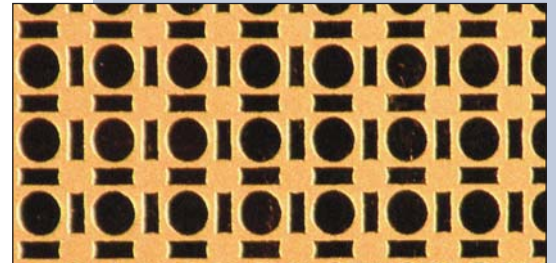
**Attractive appearance** - the surface appearance of stainless steel is quite obvious. The mirror finish of the material is distinctive. A wide range of different decos and patterns are available, with some designs used to minimise the bright reflection of flat material, and others specially developed for architectural cladding.

**Increased stiffness** - specially developed pattern rolling processes give the material considerable higher stiffness. This means that thinner gauge material can be used in some applications which require weight savings.

**High resistance to wear and scratching** - stainless steel has a natural resistance to denting and tearing. Design rolling helps to enhance this resistance. As well, vandalism by graffiti spray painting is easily rectified.

**Hygienic properties** - the nature of stainless steel makes this material ideal for use in hygienic applications. As well, high corrosion resistance means a finish that will not result in stains which can affect the surrounding clean area. Architecturally, this corrosion resistance means a consistent finish that keeps through the years.

**Cost effective** - when one considers the maintenance and replacement costs of other materials, the life cycle cost of stainless steel is extremely cost effective.



## Other Architectural Advantages

Our stainless steel products also have the following advantages:

**Versatility** - as to application and finish, is limitless. Different manufacturing and finishing methods mean that our products not only have different looks, but have different thickness and hardness to allow for many applications. These are only limited by an architect's imagination.

**Customised finishes** - we can finish base stock to include paint filling, powder coating and finishing to selected colours. As well, we are able to supply customised patterns, e.g., using your logo.

### Different Finishes

#### Mirror Finish

Material	AISI 304
Finish	No. 8
Thickness	0.8 - 3.0 mm

#### Chemicolor

Material	AISI 304
Surface Finish	HL, BA, Mirror (No. 7, No. 8, refer to your distributor regarding colours)
Colour	HL: bronze, blue, gold, red, black BA: blue, gold, red, green, black
Thickness	0.4 - 3.0 mm
Finish	Plain (single colour) Two-tone (Chemicolor treatment after etching) Partial (Discolouring or etching, after chemicolor treatment)

#### Etching Art

Material	AISI 304, AISI 430
Finish	HL, BA, No. 7, No. 8, Chemicolor, etc.
Thickness	0.4 - 3.0 mm

#### Grooved Pattern

Material	AISI 304
Finish	GP-1: 2B finish for mountain, 2D finish for valley GP-2: No. 4 polish finish for mountain, 2D finish for valley GP-3: No. 4 polish finish for mountain, valley to be coloured Standard colour are red and blue

#### Availability

Refer above mirror finish	
2438x1219	0.8, 1.0, 1.2, 1.5, 2.0 mm thickness
3048x1219	0.8, 1.0, 1.2, 1.5 mm thickness
3658x1219	1.0, 1.2, 1.5 mm
Other sizes by special indent	

